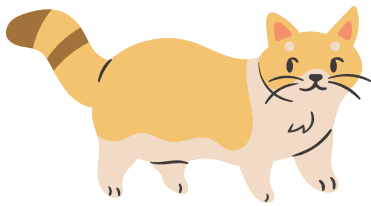


# HARD SOUND OF LETTER

# C

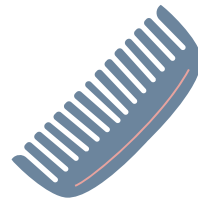
when c is followed by the vowels a, o, u or any consonant - c takes the sounds of /k/



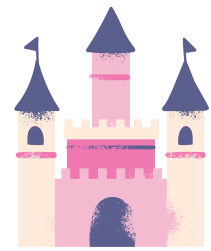
cat



cup



comb



castle

## Read

cake

cup

card

cone

cold

cub

cane

cable

cook

curd

curb

crayon

comb

cast

cloud

camel

fact

corn

climb

current

curl

cola

cut

clip

cart

clock

crime

